



## BORDATORE

## ELIET

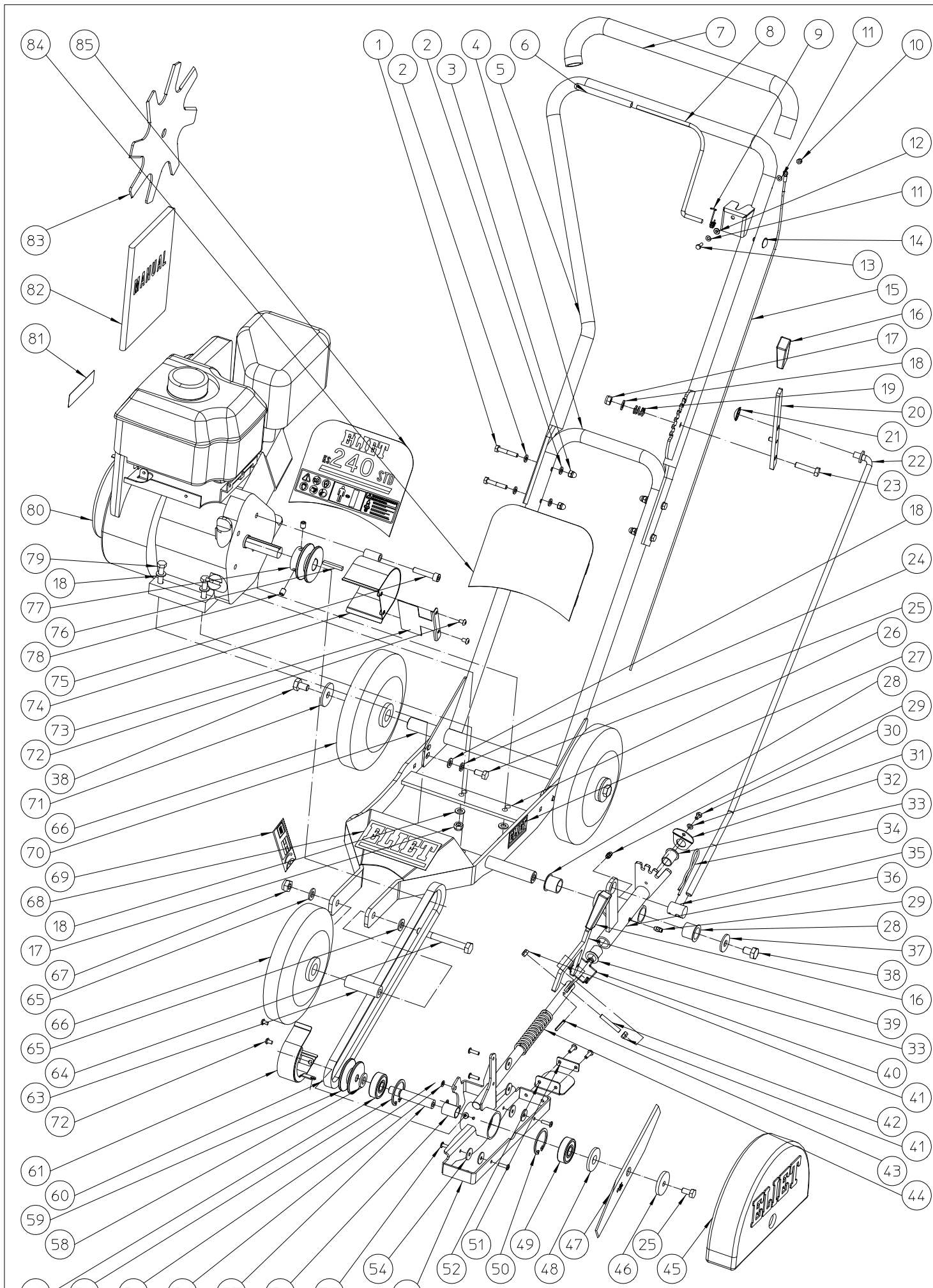
## KS240

# ELIET SPARE PARTS MANUAL

## EDGE CUTTER KS 240

### GENERAL OVERVIEW ASSEMBLYLISTS

	LIST NUMBER	DESCRIPTION	DRAWING NR.	BUILT AFTER
1	ASSEMBLYLIST 1	MACHINE ASSEMBLY	MMA 01 110 100-1	01/01/1989



ELIET EDGE CUTTER				
NO	MMA-01.110.100	REV	1	DATE
				2006/07/06

# ELIET SPARE PARTS MANUAL

## EDGE CUTTER KS 240

### ASSEMBLYLIST 1

### MACHINE ASSEMBLY

MMA 01 110 100-1

ITEM	PART NUMBER	DESCRIPTION	QUANTITY
1	BS 511 000 635	BOLT M6X35 DIN 931	4
2	BS 531 000 600	WASHER M6 DIN 125	8
3	BS 505 500 600	NUT M6 DIN 1587	4
4	MPA 01 110 070	LOWER BRACKET	1
5	MPA 01 110 050	UPPER BRACKET	1
6	BR 020 606 990	RUBBER SLEEVE 6X100	1
7	BN 231 001 057	SOFT RUBBER GRIP DIA 22MM	1
8	MPA 01 110 140	SAFETY HANDLE (PRESENCE CONTROL)	1
9	BV 911 000 040	SPRING	1
10	BS 505 500 400	NUT M4 DIN 1587	1
11	BS 531 000 400	WASHER M4 DIN 125	2
12	BR 112 060 300	NYLON BUSHING WITH COLAR (4.2/5.9/10x3/1.3)	2
13	BS 512 000 412	BOLT M4X12 DIN 933	1
14	BB 011 000 060	STARLOCK 6MM	1
15	BE 090 131 351	BLACK WIRE 1.5 CE 135	1
16	BN 230 100 200	PLASTIC GRIP 15X6X60	2
17	BS 502 000 800	SELF LOCKING NUT M8 DIN 985	5
18	BS 531 000 800	WASHER M8 DIN 125	11
19	BV 911 000 010	SPRING 14X2X16	1
20	MPA 01 110 060	HEIGHT ADJUSTMENT LEVER	1
21	BB 011 000 090	STARLOCK 9MM	1
22	MPA 01 110 080	HEIGHT ADJUSTMENT ROD	1
23	BS 512 000 835	BOLT M8X35 DIN 933	1
24	BS 534 000 800	LOCK WASHER M8 DIN 6798A	2
25	BS 512 000 816	BOLT M8X16 DIN 933	3
26	MPA 01 110 040	CHASSIS	1
27	BQ 501 010 010	STICKER ELIET 65X30	2
28	BR 112 202 100	NYLON BUSHING WITH COLAR (20/24/29x21/1)	2
29	BY 100 106 100	GREASE FITTING M6	2
30	BS 512 000 508	BOLT M5X8 DIN 933	3
31	BS 531 000 500	WASHER M5 DIN 125	3
32	MPA 01 110 190	RETAINER PLATE	1
33	BR 112 152 100	NYLON BUSHING WITH COLAR (15.4/18/23x21/1)	2
34	BB 040 103 060	HAIRPIN COTTER 3MM	1
35	MPA 01 110 100	TRUNNION	1
36	MPA 01 110 110	CRANK FOR HEIGHT ADJUSTMENT	1
37	BS 532 010 305	WASHER M10X30X2.5	1
38	BS 512 001 016	BOLT M10X16 DIN 933	3

# ELIET SPARE PARTS MANUAL

## EDGE CUTTER KS 240

### ASSEMBLYLIST 1

### MACHINE ASSEMBLY

MMA 01 110 100-1

ITEM	PART NUMBER	DESCRIPTION	QUANTITY
39	MPA 01 110 120	ANGLE SETTING LEVER	1
40	BV 911 000 020	RECALL SPRING	1
41	BS 502 000 600	SELF LOCKING NUT M6 DIN 985	2
42	BS 581 000 604	STUD M6X40	1
43	BB 120 040 300	LOCKING PIN 4X30	1
44	BV 911 000 030	SPRING 22X3X143	1
45	BR 900 000 520	KNIFE GUARD	1
46	MPA 01 110 200	WASHER FOR KNIFE FIXING	1
47	BU 103 100 100	STANDARD KNIFE	1
48	MPA 01 110 210	WASHER	1
49	BL 001 504 203	BEARING 6302 ZZ	2
50	BB 002 000 420	RETAINING RING 42 DIN 472	2
51	MPA 01 110 240	RETAINER FOR ANTIPROJECTION FLAP	1
52	BR 910 000 120	ANTIPROJECTION FLAP	1
53	MPA 01 110 020	ARM FOR KNIFE	1
54	BS 532 005 203	WASHER M5X20X1.5	6
55	BB 221 105 160	POP PLUG ALU 4.8X16	8
56	MPA 01 110 010	SPACER	1
57	MPA 01 110 220	KNIFE SHAFT	1
58	BS 531 001 200	WASHER M12 DIN 125	1
59	BA 565 705 001	PULLEY SPA 50 M12X1.25	1
60	BA 522 208 250	BELT A 32.5	1
61	MPA 01 110 170	SAFETY GUARD PULLEY (KNIFE SHAFT)	1
62	BS 522 500 610	SCREW M6X10 ISO 7380	2
63	MPA 01 080 230	WHEEL SHAFT	1
64	BS 511 001 049	BOLT M10X90 DIN 931	1
65	BS 531 001 000	WASHER M10 DIN 125	2
66	BW 120 020 000	WHEEL 200/50	3
67	BS 502 001 000	SELF LOCKING NUT M10 DIN 985	1
68	BQ 501 010 020	STICKER ELIET 130X60	1
69	BQ 505 010 010	IDENTITY STICKER CE 120X30	1
70	MPA 01 110 090	REAR WHEEL AXLE	1
71	BS 532 010 406	WASHER M10X40X3	2
72	BS 512 000 506	BOLT M5X6 DIN 933	2
73	MPA 01 110 150	COVER PULLEY (ENGINE)	1
74	MPA 01 110 160	SAFETY GUARD PULLEY (ENGINE)	1
75	BS 521 140 840	SCREW UNF 5/16X1"1/2 DIN 912	1
76	BB 342 050 535	KEY 4.7X4.7X35	1

# ELIET SPARE PARTS MANUAL

## EDGE CUTTER KS 240

### ASSEMBLYLIST 1

### MACHINE ASSEMBLY

MMA 01 110 100-1

ITEM	PART NUMBER	DESCRIPTION	QUANTITY
77	BA 565 705 601	PULLEY SPA 56X3/4"X3/16"	1
78	BS 023 000 810	SET SCREW M8X10 DIN 916	2
79	BS 512 000 840	BOLT M8X40 DIN 933	4
80	ENGINE	SEE BOTTOM OF THE PAGE	1
81	BQ 505 010 030	STICKER MAX 3200 RPM 90X25	1
82	BZ 201 110 010	MANUAL	1
83	BU 103 200 100	CUTTINGDISK 8 TOOTH (OPTIONAL)	

ENGINE	BM 201 003 500	B&S STD	3.5 HP
ENGINE	BM 202 004 000	HONDA GC 135	4 HP
ENGINE	BM 202 104 000	HONDA GX 120	4 HP
ENGINE	BM 202 005 500	HONDA GC 160	5 HP
ENGINE	BM 201 206 500	B&S INTEK PRO	6.5 HP
ENGINE	BM 202 105 500	HONDA GX 160	5.5 HP